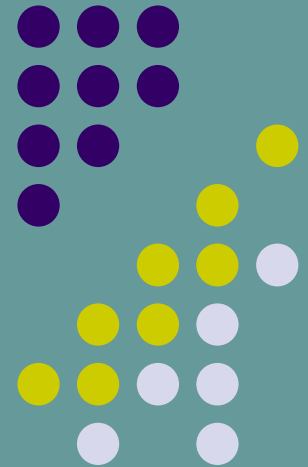
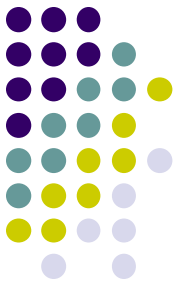


Tire Deflating Devices

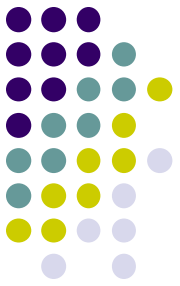


Officers Killed While Deploying Spike Strips



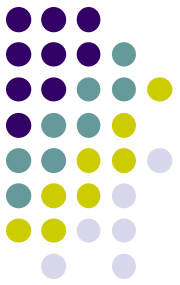
- [Deputy Sheriff John Creegan](#)
- [Detective Glenn Strange](#)
- [Sergeant Richard Asten](#)
- [Sergeant George Dingwall](#)
- [Patrolman Lloyd Aragon](#)
- [Deputy Sheriff Dennis McElderry](#)
- [Sergeant Michael Johnson](#)
- [Deputy Sheriff Charles Sease](#)
- [Deputy Sheriff John Musice](#)
- [Sergeant Jerry Mundy](#)
- [Police Officer Shawn Silvera](#)
- [Corporal Mark Carthron](#)
- [Officer James Sell](#)
- [Police Officer Nick-Tomasito Birco](#)
- [Officer Douglas Russell](#)
- [Deputy Sheriff Donta Manuel](#)
- [Deputy Sheriff Jonathan Wallace](#)
- [Senior Border Patrol Agent Luis Aguilar](#)
- [Lieutenant Stuart Alexander](#)
- [Officer Christopher Marano](#)
- [Sheriff Garry Welford](#)

Criteria For Deployment



- Suspect committed an offense justifying use
- Officer providing proper notice to stop (lights and/or siren)
- Suspect ignores efforts of warning devices
- Agency should have policy

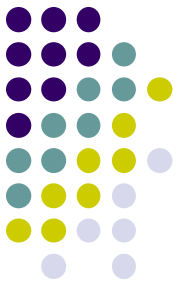




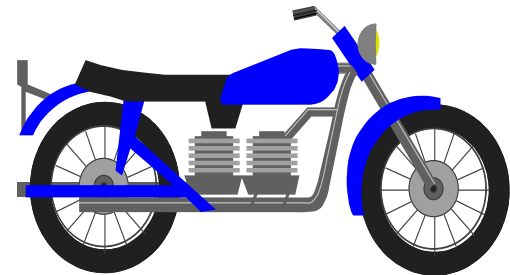
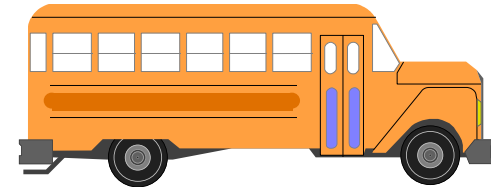
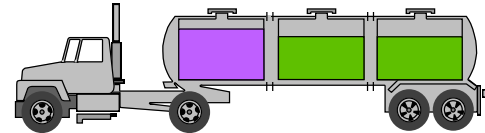
Officer Considerations

- Effective location for spikes
- Must have reasonably good sight distance to observe violator vehicle (Brower Vs Inyo County-1989/ Seekamp vs Michaud- 1996)
- Choose location (possibly) with natural barriers ...roadway overpass, guardrails or shrubbery, trees, bridge abutments & darkness
- Traffic, construction, special events, and/or other activities may create situations where use of spikes are inappropriate
- Limit escape routes
- Officer should have received training on use

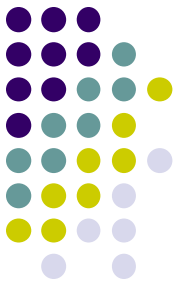
Vehicle's NOT To Spike



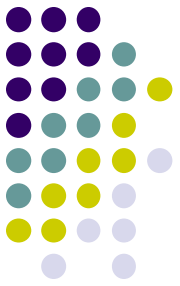
- Any vehicle transporting hazardous materials
- Any passenger bus
- Any school bus transporting students
- Any vehicle that would pose an unusual hazard
- ANY two wheel vehicle unless deadly force is justified



Coordination of Deployment



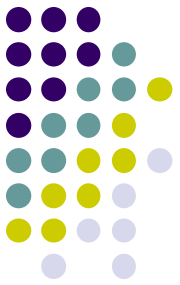
- Notify pursuing units in advance (obtain speed, # of vehicles involved and risks - weapons)
- Predetermined location for deployment
- ALL pursuing units notified when spikes are in place & communicate with primary unit
- Spike deployed in accordance with SOP's or manufacturer recommendations



Successful Deployment

- Training + Pre-planning + Good Communications + Strategy = Safety and Effectiveness

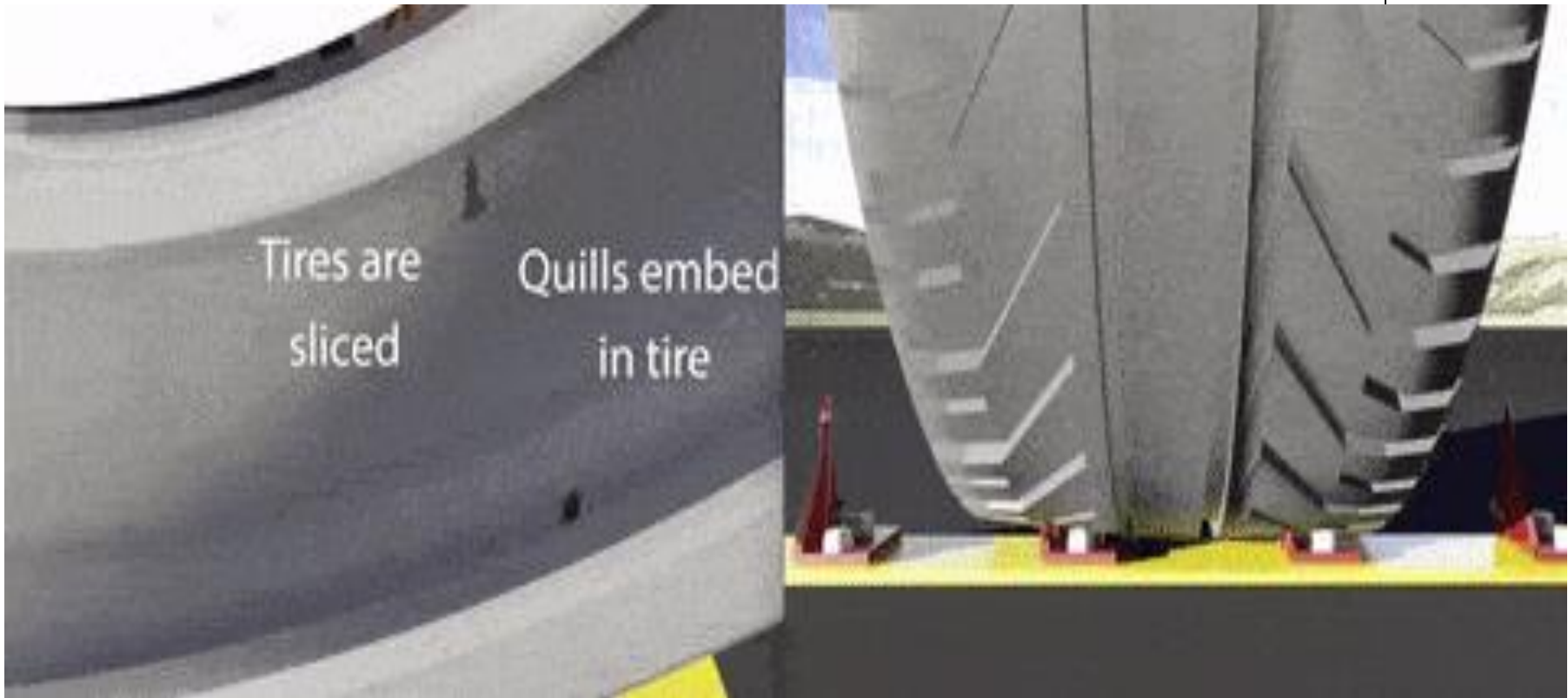
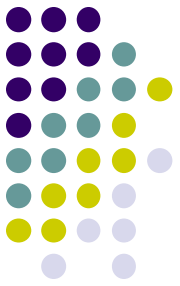




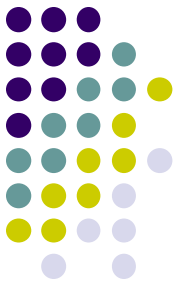
Deployment

- Place deflating device on opposite side of roadway - string lying across roadway
- Pull tire deflating unit into violator's path
- After violator strikes unit, run from scene/area pulling device from roadway
- Notify pursuing units if spikes were effective or not effective
- Notify pursuing units that roadway is clear in either case

How It Works

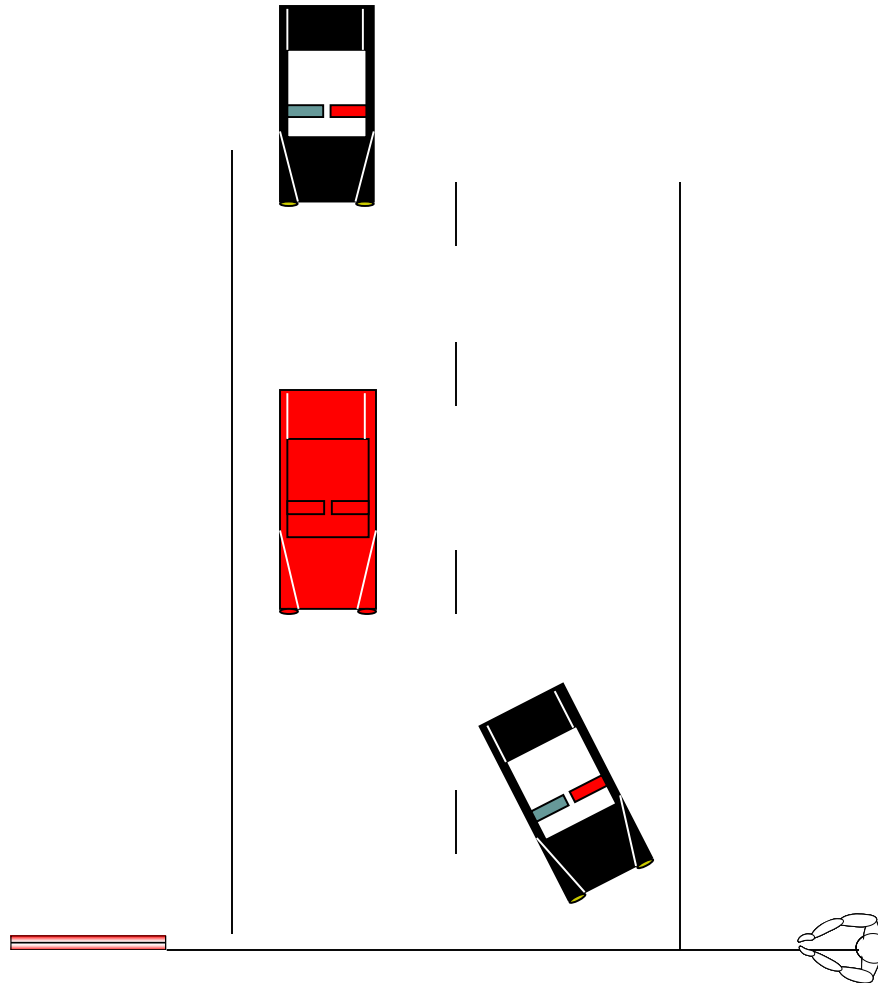
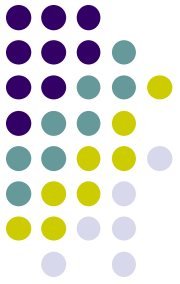


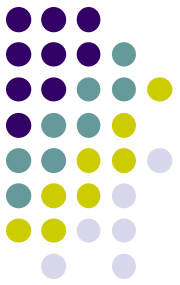
One Vehicle Deployment



- Place vehicle, 45-degree angle, across proper lane of travel (within your lane of travel)
- Emergency lights illuminated
- Be prepared to notify public to pass or stop
- Place spikes in lane or path of travel of violator
- Remove tire deflating device from roadway as soon as possible after being struck
- Indicate or notify pursuing units that roadway is clear

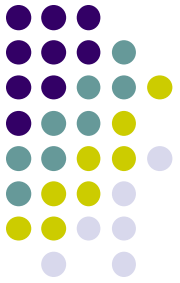
Single Unit Deployment



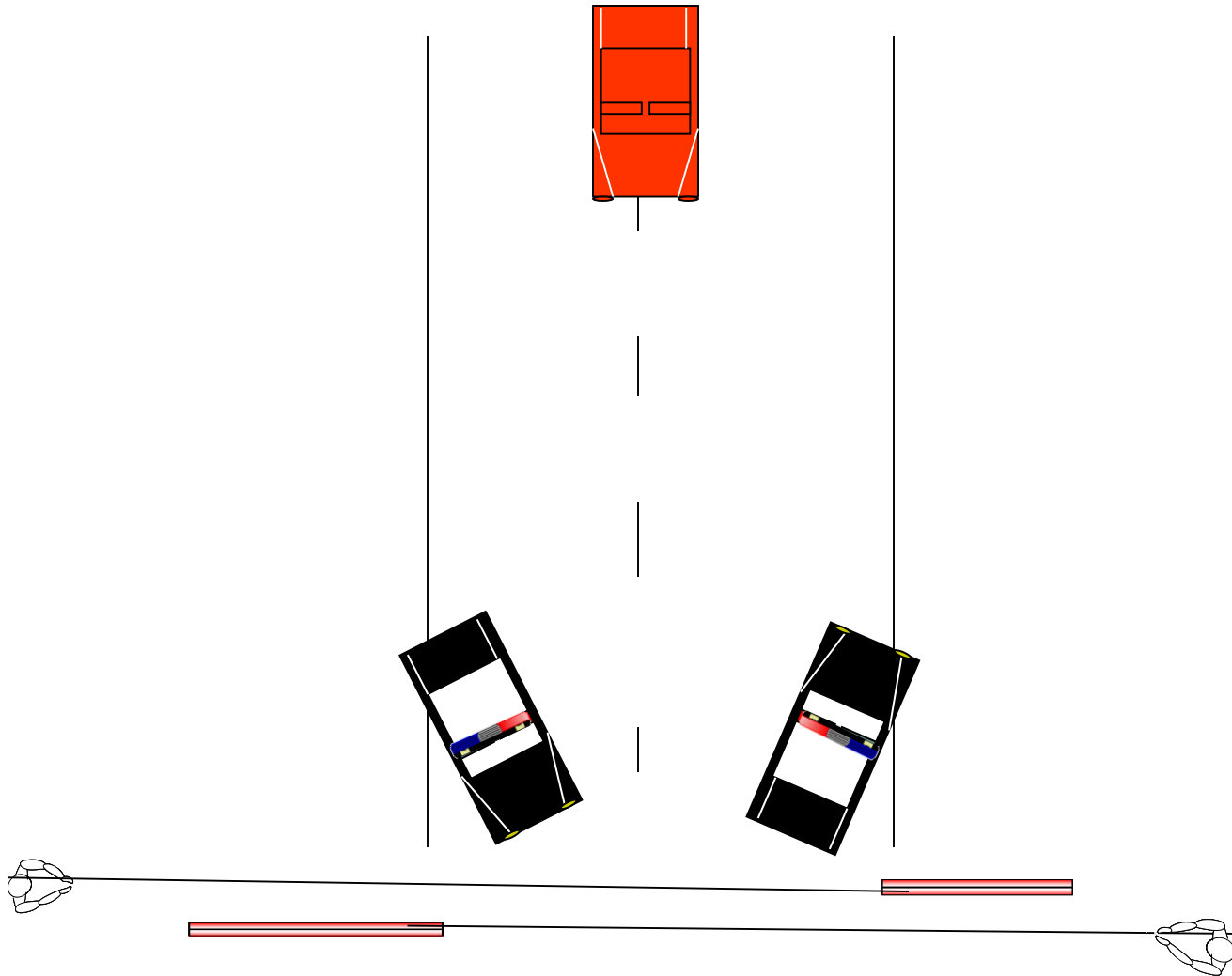


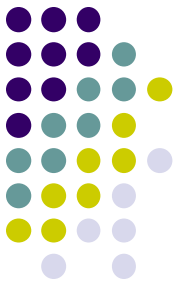
Two Vehicle Deployment

- Position vehicles at a 45-degree angle (one on each side of the roadway (form a funnel))
- Emergency lights illuminated
- Vehicles should be facing opposite directions (i.e...one facing north, one facing south) - tactical purpose
- Be prepared to move traffic or stop traffic
- Place sticks in path of travel of violator
- Remove as soon as possible after sticks struck & notify pursuing units that roadway is clear



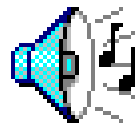
2 Vehicle Deployment





Warnings

- Do not handle unit unnecessarily
- Do not hold rope in hand or wrap around hand or wrist
- If spikes are dropped or spilled, pick up immediately
- Safety considerations (eyes - debris, body)



Dane County Sheriff's Of

Date 03-28-2008

Time 14:07:15

Unit 9962

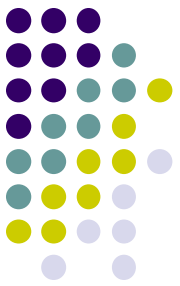
Lat 43°14'08"

Lon 89°09'03"

Dir

RadarSpeed 000

Lights



Questions

